



F  
E  
D  
C  
B  
A

10 9 8 7 6 5 4 3 2 1



MAP LABEL	AIDS TO NAVIGATION	PLANE COORDINATES		LATITUDE	LONGITUDE
		X	Y		
G^49	A19 (03/20)	695.517	839.395	26°38'24.54"	81°52'46.30"
R^52	A52 (03/20)	695.426	838.874	26°38'29.89"	81°52'48.11"
INFO SIGN	SIGN (03/20)	696.644	840.129	26°38'41.79"	81°52'48.33"

**US Army Corps of Engineers**  
Jacksonville District  
SAFETY ON THIS JOB  
DEPENDS ON YOU


DEPARTMENT OF THE ARMY  
JACKSONVILLE DISTRICT, CORPS OF ENGINEERS  
JACKSONVILLE, FLORIDA

Checked by: GMR  
Designed by: WRM  
Drawn by: WRM  
File Name: J:\09MHC-BB-RRR\_09MHWEST.DGN  
Reference File: J:\09MHWEST.DGN

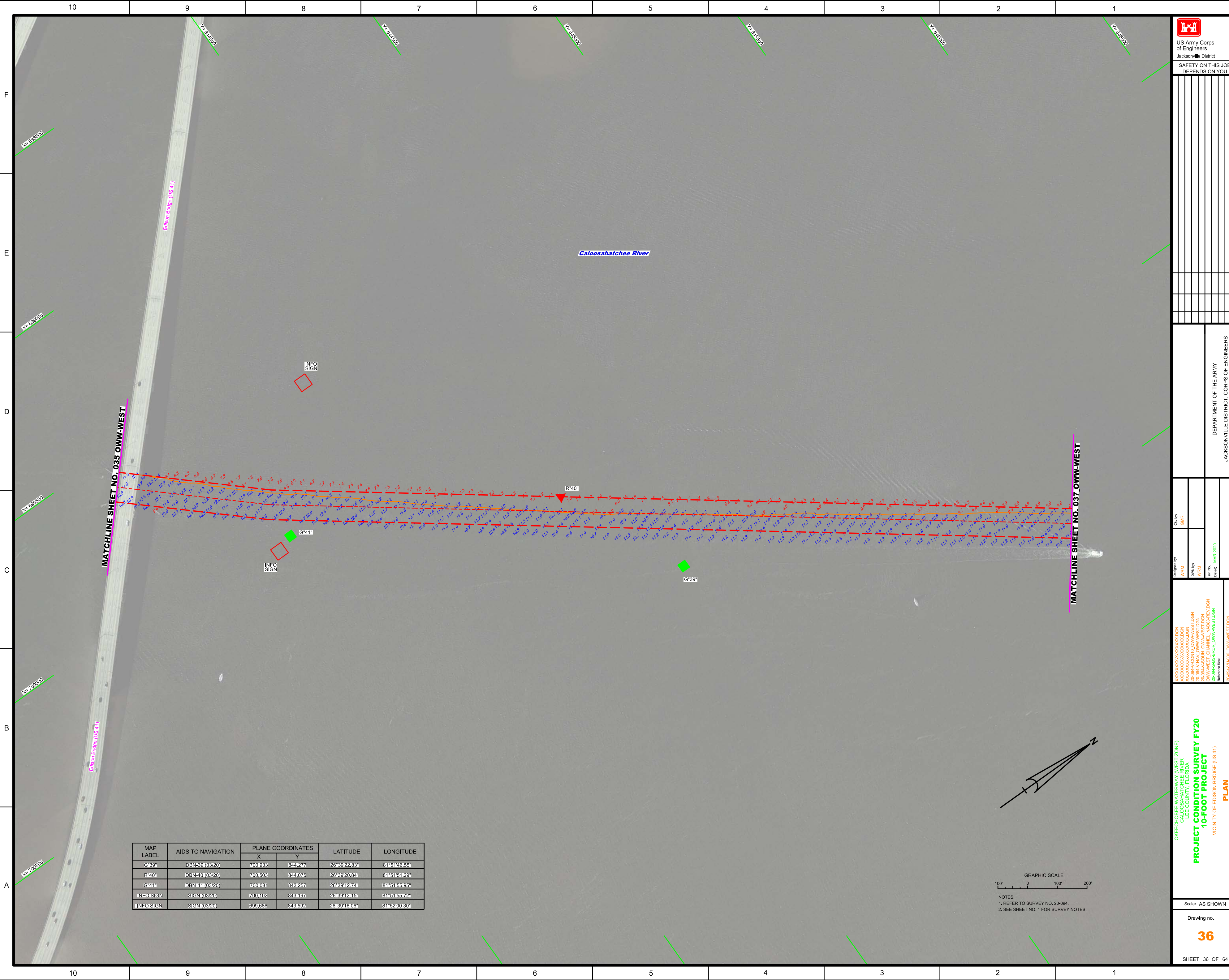
**PROJECT CONDITION SURVEY FY20  
10-FOOT PROJECT  
VICINITY OF THE CALOOSAHATCHEE BRIDGE  
PLAN**

Scale: AS SHOWN  
Drawing no.  
**34**

GRAPHIC SCALE  
100' 0 100' 200'

NOTES:  
1. REFER TO SURVEY NO. 20-094.  
2. SEE SHEET NO. 1 FOR SURVEY NOTES.





MAP LABEL	AIDS TO NAVIGATION	PLANE COORDINATES		LATITUDE	LONGITUDE
		X	Y		
G*39"	DBN#39(03/20)	700088	844277	26°39'22.83"	81°51'46.55"
R40"	DBN#40(03/20)	700096	844075	26°39'20.84"	81°51'51.26"
G*41"	DBN#41(03/20)	700081	848257	26°39'42.74"	81°51'55.95"
INFO SIGN	SIGN(03/20)	700102	848197	26°39'42.15"	81°51'55.72"
INFO SIGN	SIGN(03/20)	699686	848592	26°39'46.05"	81°52'00.30"

GRAPHIC SCALE  
 100' 0 100' 200'  
 NOTES:  
 1. REFER TO SURVEY NO. 20-094.  
 2. SEE SHEET NO. 1 FOR SURVEY NOTES.

US Army Corps of Engineers  
 Jacksonville District  
 SAFETY ON THIS JOB DEPENDS ON YOU

---

DEPARTMENT OF THE ARMY  
 JACKSONVILLE DISTRICT, CORPS OF ENGINEERS  
 JACKSONVILLE, FLORIDA

---

Drawn by: WRM Designated by: WRM Checked: WRM Date: MAR 2020	Cut by: GHR Designated by: GHR Checked: GHR Date: MAR 2020
---	---

---

OKEECHOBEE WATERWAY (WEST ZONE)  
 CALOOSAHATCHEE RIVER  
 DEEC COUNTY, FLORIDA  
**PROJECT CONDITION SURVEY FY20**  
**10-FOOT PROJECT**  
 VICINITY OF EDISON BRIDGE (US 41)  
**PLAN**

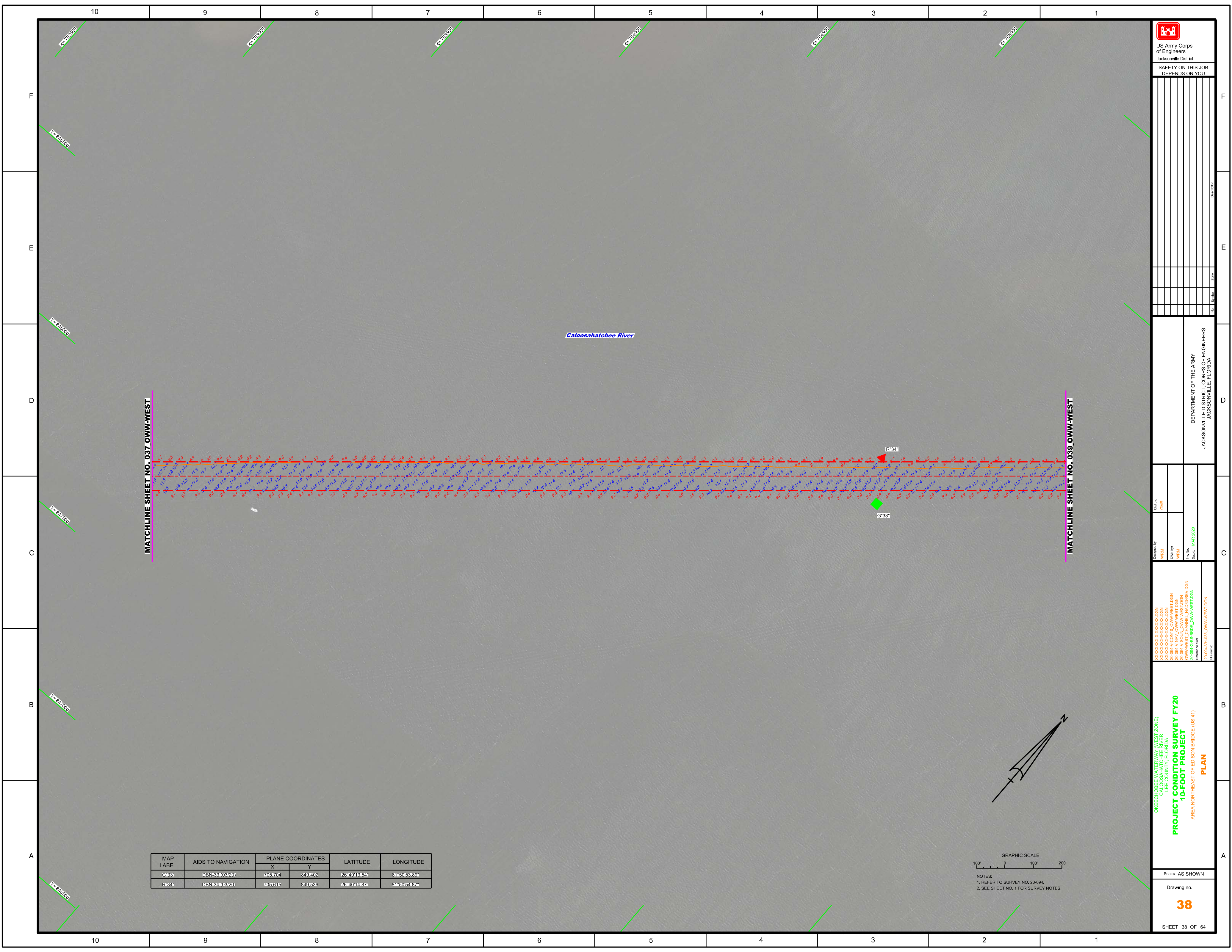
---

Scale: AS SHOWN

Drawing no.  
**36**

SHEET 36 OF 64



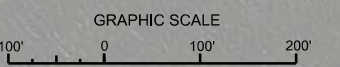


MATCHLINE SHEET NO. 037\_OWW-WEST

MATCHLINE SHEET NO. 039\_OWW-WEST

**Caloosahatchee River**

MAP LABEL	AIDS TO NAVIGATION	PLANE COORDINATES		LATITUDE	LONGITUDE
		X	Y		
G-33	DBN-33103120	7057.01	849.402	26°40'48.54"	81°50'53.89"
R-34	DBN-34103120	7055.615	849.538	26°40'44.87"	81°50'54.87"



NOTES:  
 1. REFER TO SURVEY NO. 20-094.  
 2. SEE SHEET NO. 1 FOR SURVEY NOTES.

US Army Corps of Engineers  
 Jacksonville District  
 SAFETY ON THIS JOB DEPENDS ON YOU

DESIGNED BY: WRM  
 DWN BY: WRM  
 FILE NO.: OWW-CH-10-037  
 DATE: MAR 2020

DEPARTMENT OF THE ARMY  
 JACKSONVILLE DISTRICT, CORPS OF ENGINEERS  
 JACKSONVILLE, FLORIDA

OKEECHOBEE WATERWAY (WEST ZONE)  
 CALOOSAHATCHEE RIVER  
 WEE COUNTY, FLORIDA  
**PROJECT CONDITION SURVEY FY20  
 10-FOOT PROJECT**  
 AREA NORTHEAST OF EDISON BRIDGE (US 41)  
**PLAN**


Scale: AS SHOWN  
 Drawing no. **38**  
 SHEET 38 OF 64









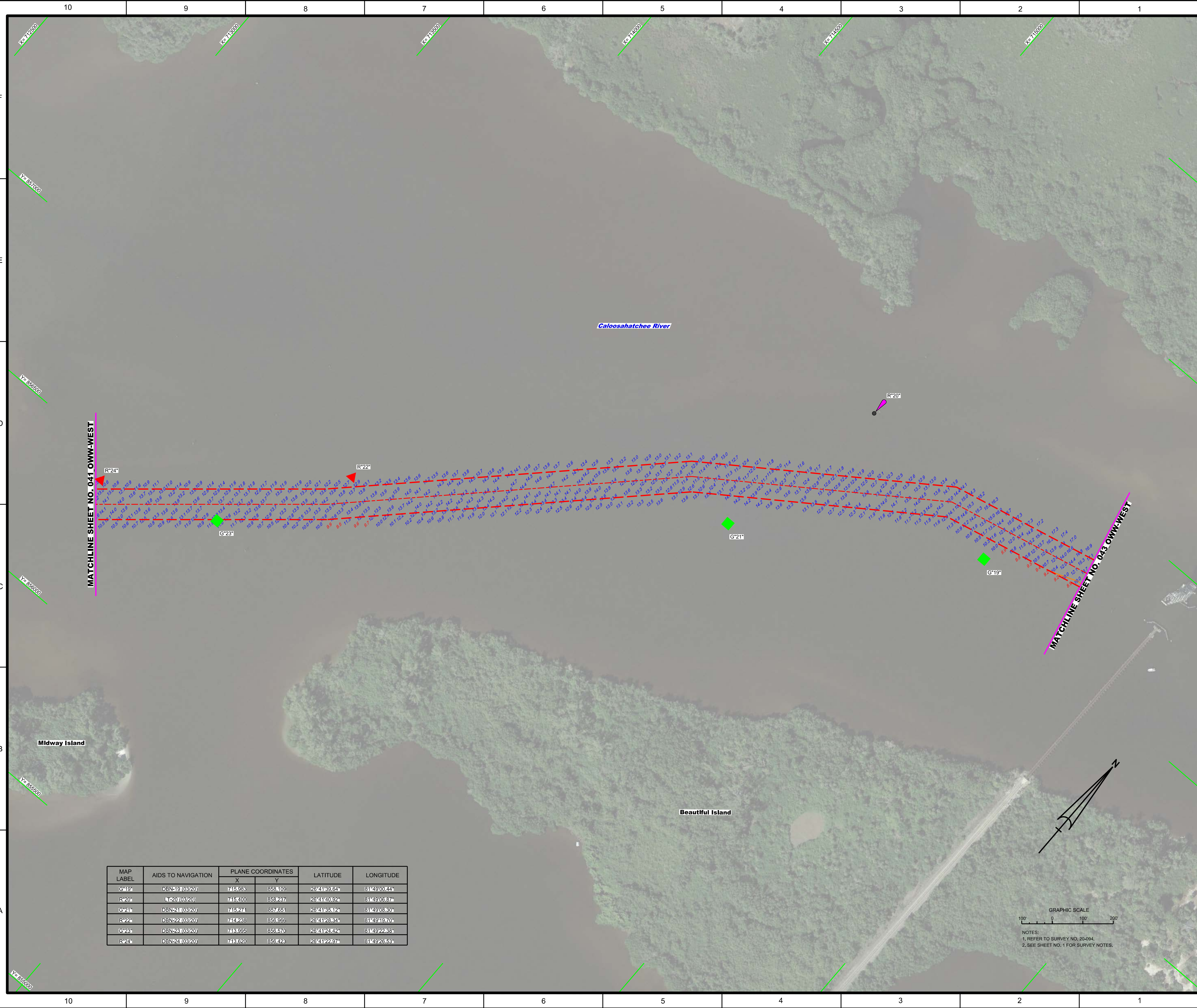

  
 US Army Corps of Engineers
   
 Jacksonville District
   
 SAFETY ON THIS JOB
   
 DEPENDS ON YOU

DEPARTMENT OF THE ARMY
   
 JACKSONVILLE DISTRICT, CORPS OF ENGINEERS
   
 JACKSONVILLE, FLORIDA

Drawn By: <b>WRM</b>	Check By: <b>GHR</b>
Design Date: <b>MAR 2020</b>	Date: <b>MAR 2020</b>
File Name: <b>Z:\O&amp;A\HAZL_041_043_044\041_043_044_10FOOT_PROJECT_PLAN.dgn</b>	Reference File: <b>Z:\O&amp;A\HAZL_041_043_044\041_043_044_10FOOT_PROJECT_PLAN.dgn</b>

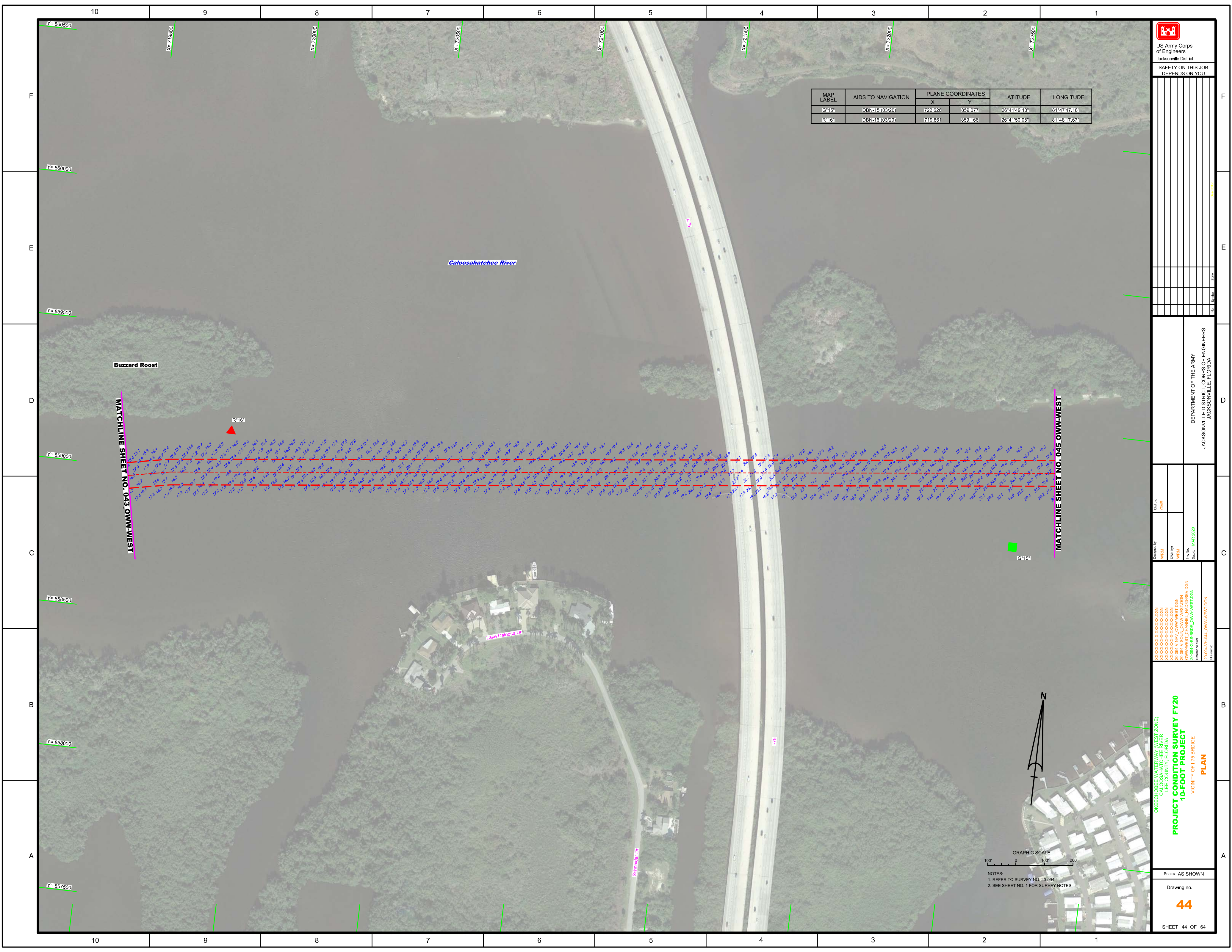
OKEECHOBEE WATERWAY (WEST ZONE)
   
 CALOOSAHATCHEE RIVER
   
 DEER COUNTY, FLORIDA
   
**PROJECT CONDITION SURVEY FY20**
  
**10-FOOT PROJECT**
  
 VICINITY OF BEAUTIFUL AND MIDWAY ISLANDS
   
**PLAN**

Scale: AS SHOWN
   
 Drawing no.
   
**42**
  
 SHEET 42 OF 64



MAP LABEL	AIDS TO NAVIGATION	PLANE COORDINATES		LATITUDE	LONGITUDE
		X	Y		
G'19'	DBN191(03/20)	745083	859106	26°41'39.84"	81°49'00.44"
R'20'	DBN201(03/20)	745100	859237	26°41'40.92"	81°49'03.87"
G'21'	DBN211(03/20)	745274	857651	26°41'35.12"	81°49'08.30"
R'22'	DBN221(03/20)	744268	859856	26°41'28.34"	81°49'19.70"
G'23'	DBN231(03/20)	748395	859570	26°41'24.82"	81°49'22.38"
R'24'	DBN241(03/20)	748620	859426	26°41'22.97"	81°49'23.53"





MAP LABEL	AIDS TO NAVIGATION	PLANE COORDINATES		LATITUDE	LONGITUDE
		X	Y		
G*15	DBN15(0320)	7222926	8590771	26°41'59.13"	81°47'47.18"
R*16	DBN16(0320)	7193861	8591166	26°41'50.05"	81°48'17.67"

US Army Corps of Engineers  
Jacksonville District

SAFETY ON THIS JOB  
DEPENDS ON YOU

DEPARTMENT OF THE ARMY  
JACKSONVILLE DISTRICT, CORPS OF ENGINEERS  
JACKSONVILLE, FLORIDA

Designed by: WRM  
Checked by: GHR  
Date: MAR 2020

OKEECHOBEE WATERWAY (WEST ZONE)  
CALOOSAHATCHEE RIVER  
LEE COUNTY, FLORIDA  
**PROJECT CONDITION SURVEY FY20**  
**10-FOOT PROJECT**  
VICINITY OF I-75 BRIDGE  
**PLAN**

Scale: AS SHOWN  
Drawing no.  
**44**  
SHEET 44 OF 64

GRAPHIC SCALE  
0 100' 200'  
NOTES:  
1. REFER TO SURVEY NO. 20-094.  
2. SEE SHEET NO. 1 FOR SURVEY NOTES.

10 9 8 7 6 5 4 3 2 1

F  
E  
D  
C  
B  
A

X= 722500 X= 723000 X= 723500 X= 724000 X= 724500 X= 725000 X= 725500 X= 726000

Y= 860500

Y= 860000

Y= 859500

Y= 859000

Y= 858500

Y= 858000

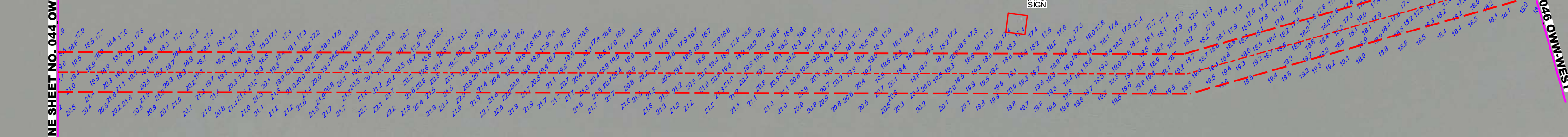


SAFETY ON THIS JOB  
DEPENDS ON YOU

MAP LABEL	AIDS TO NAVIGATION	PLANE COORDINATES		LATITUDE	LONGITUDE
		X	Y		
G-18	LT-18 (03/20)	725,005	859,365	26°41'51.84"	81°47'20.84"
INFO SIGN	SIGN (03/20)	724,869	859,707	26°41'55.83"	81°47'22.43"

MATCHLINE SHEET NO. 044 OWW-WEST

MATCHLINE SHEET NO. 046 OWW-WEST



INFO SIGN

G-13

Caloosahatchee River

Orange River

10 9 8 7 6 5 4 3 2 1

10

9

8

7

6

5

4

3

2

1

F  
E  
D  
C  
B  
A

DEPARTMENT OF THE ARMY  
JACKSONVILLE DISTRICT, CORPS OF ENGINEERS  
JACKSONVILLE, FLORIDA

Designed by: WRM  
Checked by: GHR  
DATE: MAR 2020  
PROJECT: 044 OWW-WEST

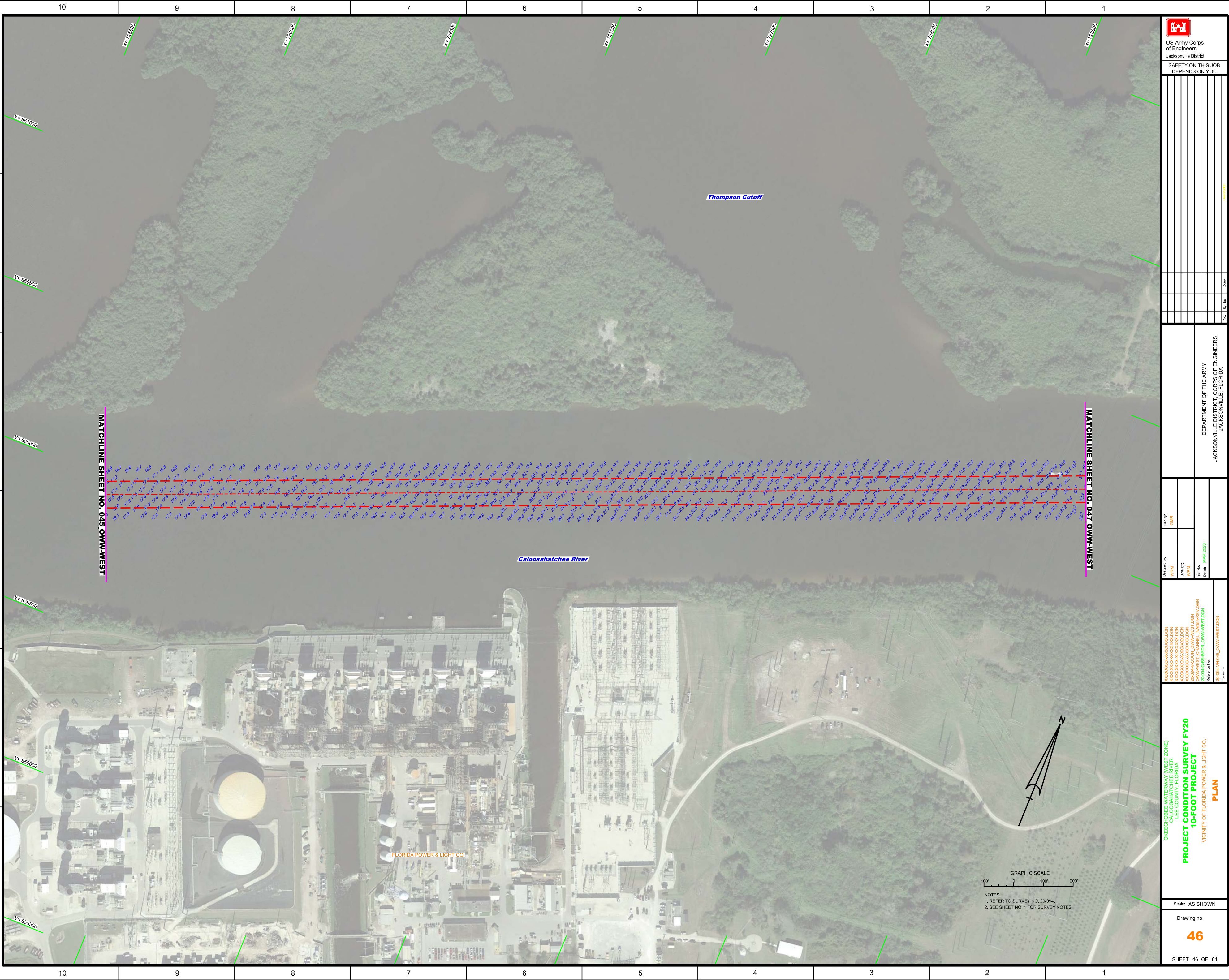
**PROJECT CONDITION SURVEY FY20**  
**10-FOOT PROJECT**  
AREA NORTHEAST OF FLORIDA POWER & LIGHT CO.  
**PLAN**

Scale: AS SHOWN  
Drawing no. **45**  
SHEET 45 OF 64



GRAPHIC SCALE  
0 100 200

NOTES:  
1. REFER TO SURVEY NO. 20-094.  
2. SEE SHEET NO. 1 FOR SURVEY NOTES.



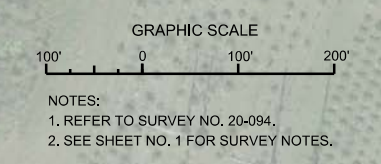
MATCHLINE SHEET NO. 045 OWM-WEST

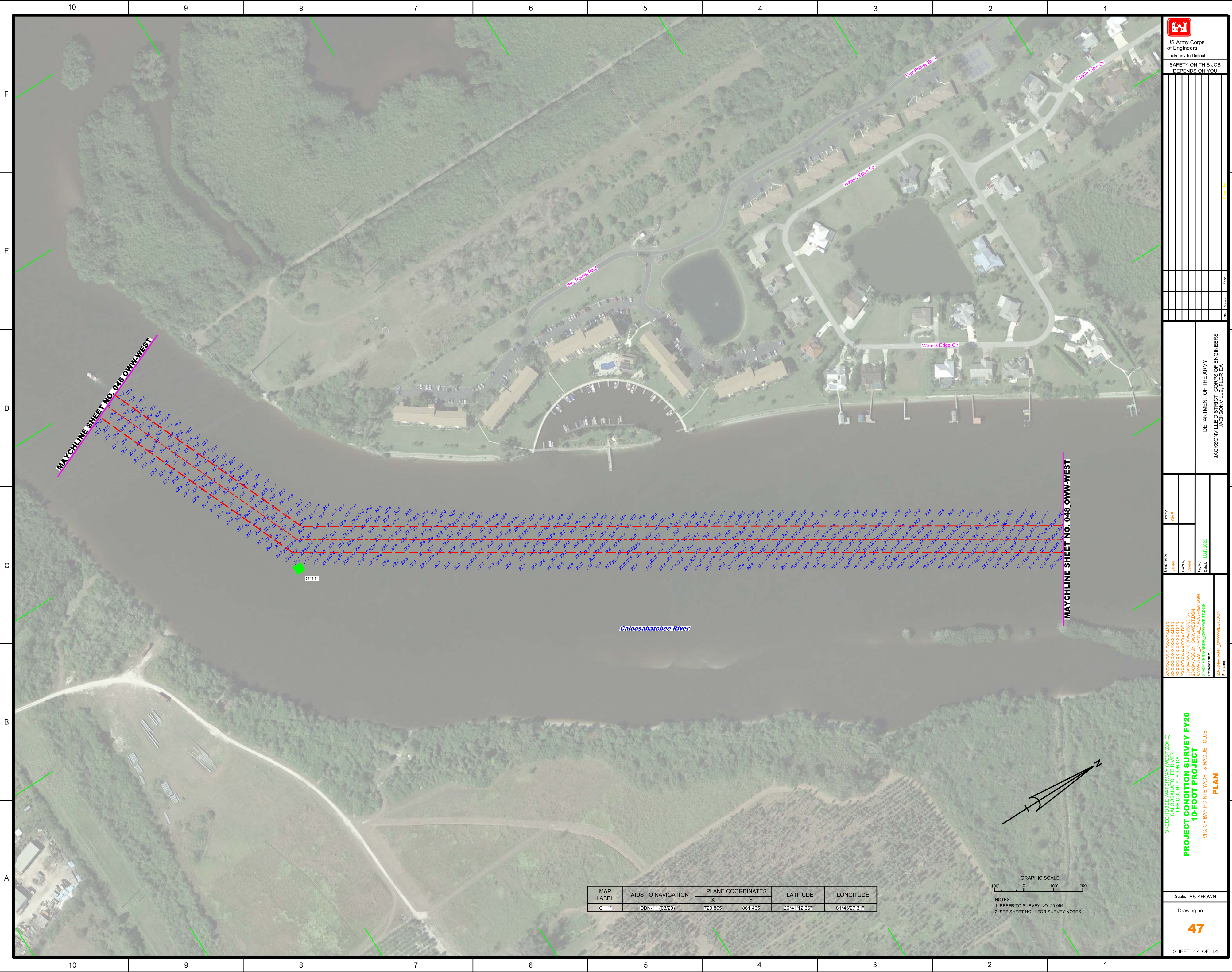
MATCHLINE SHEET NO. 047 OWM-WEST


Caloosahatchee River

Thompson Cutoff

FLORIDA POWER & LIGHT CO.





  
 US Army Corps of Engineers  
 Jacksonville District  
 SAFETY ON THIS JOB DEPENDS ON YOU

DEPARTMENT OF THE ARMY  
 JACKSONVILLE DISTRICT, CORPS OF ENGINEERS  
 JACKSONVILLE, FLORIDA

Designed by: WRM  
 Checked by: GHR  
 Date: MAR 2020

OKEECHOBEE WATERWAY (WEST ZONE)  
 CALOOSAHATCHEE RIVER  
 BEE COUNTY, FLORIDA  
**PROJECT CONDITION SURVEY FY20**  
**10-FOOT PROJECT**  
 VIC. OF BAY POINT YACHT & RAQUET CLUB  
**PLAN**

Scale: AS SHOWN  
 Drawing no.  
**47**  
 SHEET 47 OF 64

MAP LABEL	AIDS TO NAVIGATION	PLANE COORDINATES		LATITUDE	LONGITUDE
		X	Y		
G*11*	DBN-11 (03/20)	729,865	861,465	26°41'12.66"	81°46'27.31"



NOTES:  
 1. REFER TO SURVEY NO. 20-094.  
 2. SEE SHEET NO. 1 FOR SURVEY NOTES.

